

State of Rhode Island and Providence Plantations

Budget



Fiscal Year 2015

Volume I – General Government, Quasi-Public Agencies and
Component Units

Lincoln D. Chafee, Governor

Dedication

*This year's budget documents are dedicated to the
Memory of William V. Golas, Jr.
Sr. Budget Analyst 1987 - 2013*

The image on the cover of this year's budget document is a Winter Scene of the State House from Artist John Pitocco of Providence and is reproduced by permission of the artist in collaboration with the Rhode Island State Council on the Arts.

Agency

Rhode Island Ethics Commission

Agency Mission

Ensure that public officials and employees adhere to the highest standards of ethical conduct, respect the public trust, avoid the appearance of impropriety, and not use their position for private gain or advantage.

Respond efficiently and thoroughly to public inquiries regarding requirements of the Code of Ethics for public officials and employees.

Thoroughly investigate complaints alleging violations of the provisions of the Code of Ethics in a timely manner.

Expand the use of technology in all aspects of the Commission's operations and ensuring greater public access to information and more effective use of investigative and informational resources.

Provide educational and informational seminars, programs and publications for public officials and employees and the public-at-large regarding codes of conduct for public servants and the workings of the Ethics Commission.

Agency Description

The independent, non-partisan Rhode Island Ethics Commission was established pursuant to an amendment to the Rhode Island Constitution, approved by the voters on November 4, 1986. The Commission's first members were appointed on July 25, 1987, pursuant to Title 36, Chapter 14 of the Rhode Island General Laws. The operations of the Ethics Commission include formulating policies and regulations relating to the conduct of public officials and employees; investigating and adjudicating complaints alleging violations of the Code of Ethics; maintaining files on more than 4,500 Financial Disclosure Statements per year; issuing advisory opinions to public officials and employees at their request regarding the application of the Code of Ethics to a specific situation, and educating public officials, employees and members of the public as to the requirements of the Code of Ethics and the functions of the Commission.

The staff of the Commission is headed by an Executive Director/Chief Prosecutor, who is hired by the Commission. The Commission's operations are funded solely with state general revenues.

Statutory History

Title 36 Chapter 14 of the Rhode Island General Laws establishes the Ethics Commission, sets forth the legislative provisions of the Code of Ethics and defines the Commission's advisory, investigative and adjudicative powers.

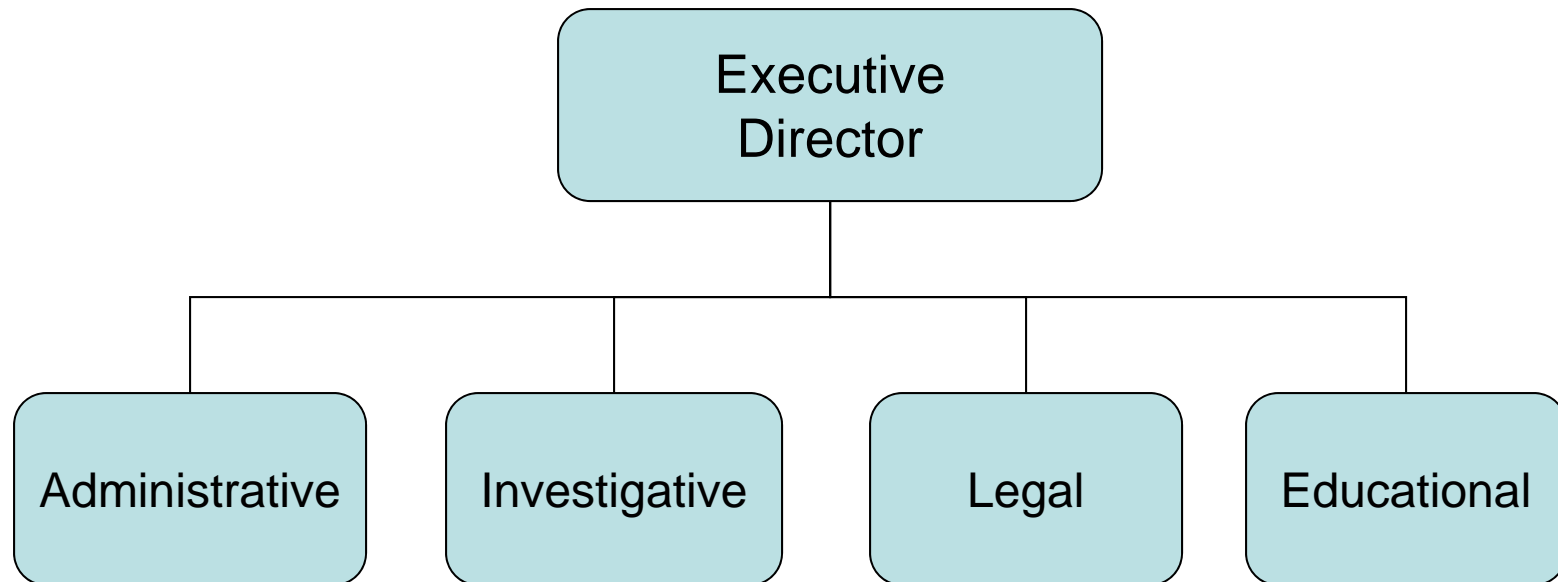
The Budget

Rhode Island Ethics Commission RI Ethics Commission

	2012 Audited	2013 Audited	2014 Enacted	2014 Revised	2015 Recommend
Expenditures By Subprogram					
Operations	1,410,813	1,500,568	1,577,204	1,575,940	1,581,205
Total Expenditures	\$1,410,813	\$1,500,568	\$1,577,204	\$1,575,940	\$1,581,205
Expenditures By Object					
Personnel	1,249,348	1,331,270	1,408,781	1,398,226	1,409,575
Operating Supplies and Expenses	155,716	154,157	162,305	171,596	165,512
Subtotal: Operating Expenditures	1,405,064	1,485,427	1,571,086	1,569,822	1,575,087
Capital Purchases and Equipment	5,749	15,141	6,118	6,118	6,118
Total Expenditures	\$1,410,813	\$1,500,568	\$1,577,204	\$1,575,940	\$1,581,205
Expenditures By Funds					
General Revenue	1,410,813	1,500,568	1,577,204	1,575,940	1,581,205
Total Expenditures	\$1,410,813	\$1,500,568	\$1,577,204	\$1,575,940	\$1,581,205

The Agency

Rhode Island Ethics Commission



Personnel

Rhode Island Ethics Commission

RI Ethics Commission

	Grade	FY 2014		FY 2015	
		FTE	Cost	FTE	Cost
Unclassified					
EXECUTIVE DIRECTOR/CHIEF PROSECUTOR	00845A	1.0	130,324	1.0	130,324
CHIEF OF THE OFFICE OF INVESTIGATIONS	00836A	1.0	101,197	1.0	101,197
STAFF ATTORNEY V	00836A	1.0	93,762	1.0	93,762
STAFF ATTORNEY IV	00834A	1.0	87,519	1.0	87,519
SPECIAL PROJECTS COORDINATOR	00829A	1.0	79,063	1.0	79,063
SENIOR CONFIDENTIAL INVESTIGATOR	00832A	1.0	77,664	1.0	77,664
STAFF ATTORNEY II	00830A	1.0	69,632	1.0	71,882
STAFF ATTORNEY I	00828A	1.0	63,323	1.0	63,323
ADMINISTRATIVE OFFICER	00822A	1.0	54,941	1.0	54,941
INVESTIGATOR I	00823A	1.0	54,459	1.0	54,459
ADMINISTRATIVE ASSISTANT	00816A	1.0	42,623	1.0	42,623
RESEARCH AIDE	00810A	1.0	32,874	1.0	33,417
Subtotal		12.0	\$887,381	12.0	\$890,174
Total Salaries		12.0	\$887,381	12.0	\$890,174
Benefits					
Payroll Accrual			5,071		5,087
FICA			66,835		67,259
Retiree Health			62,738		60,088
Health Benefits			93,571		101,055
Retirement			213,416		216,579
Subtotal			\$441,631		\$450,068
Total Salaries and Benefits		12.0	\$1,329,012	12.0	\$1,340,242
Cost Per FTE Position (Excluding Temporary and Seasonal)			\$110,751		\$111,687
Statewide Benefit Assessment			\$37,714		\$37,833
Payroll Costs		12.0	\$1,366,726	12.0	\$1,378,075
Purchased Services					
Information Technology			10,000		10,000
Clerical and Temporary Services			4,400		4,400
Legal Services			17,000		17,000
Other Contracts			100		100
Subtotal			\$31,500		\$31,500
Total Personnel		12.0	\$1,398,226	12.0	\$1,409,575
Distribution By Source Of Funds					
General Revenue		12.0	\$1,398,226	12.0	\$1,409,575
Total All Funds		12.0	\$1,398,226	12.0	\$1,409,575

Personnel

Rhode Island Ethics Commission Agency Summary

	Grade	FY 2014		FY 2015	
		FTE	Cost	FTE	Cost
Unclassified		12.0	887,381	12.0	890,174
Subtotal		12.0	\$887,381	12.0	\$890,174
Total Salaries		12.0	\$887,381	12.0	\$890,174
Benefits					
Payroll Accrual			5,071		5,087
FICA			66,835		67,259
Retiree Health			62,738		60,088
Health Benefits			93,571		101,055
Retirement			213,416		216,579
Subtotal			\$441,631		\$450,068
Total Salaries and Benefits		12.0	\$1,329,012	12.0	\$1,340,242
Cost Per FTE Position (Excluding Temporary and Seasonal)			\$110,751		\$111,687
Statewide Benefit Assessment			\$37,714		\$37,833
Payroll Costs		12.0	\$1,366,726	12.0	\$1,378,075
Purchased Services					
Information Technology			10,000		10,000
Clerical and Temporary Services			4,400		4,400
Legal Services			17,000		17,000
Other Contracts			100		100
Subtotal			\$31,500		\$31,500
Total Personnel		12.0	\$1,398,226	12.0	\$1,409,575
Distribution By Source Of Funds					
General Revenue		12.0	\$1,398,226	12.0	\$1,409,575
Total All Funds		12.0	\$1,398,226	12.0	\$1,409,575